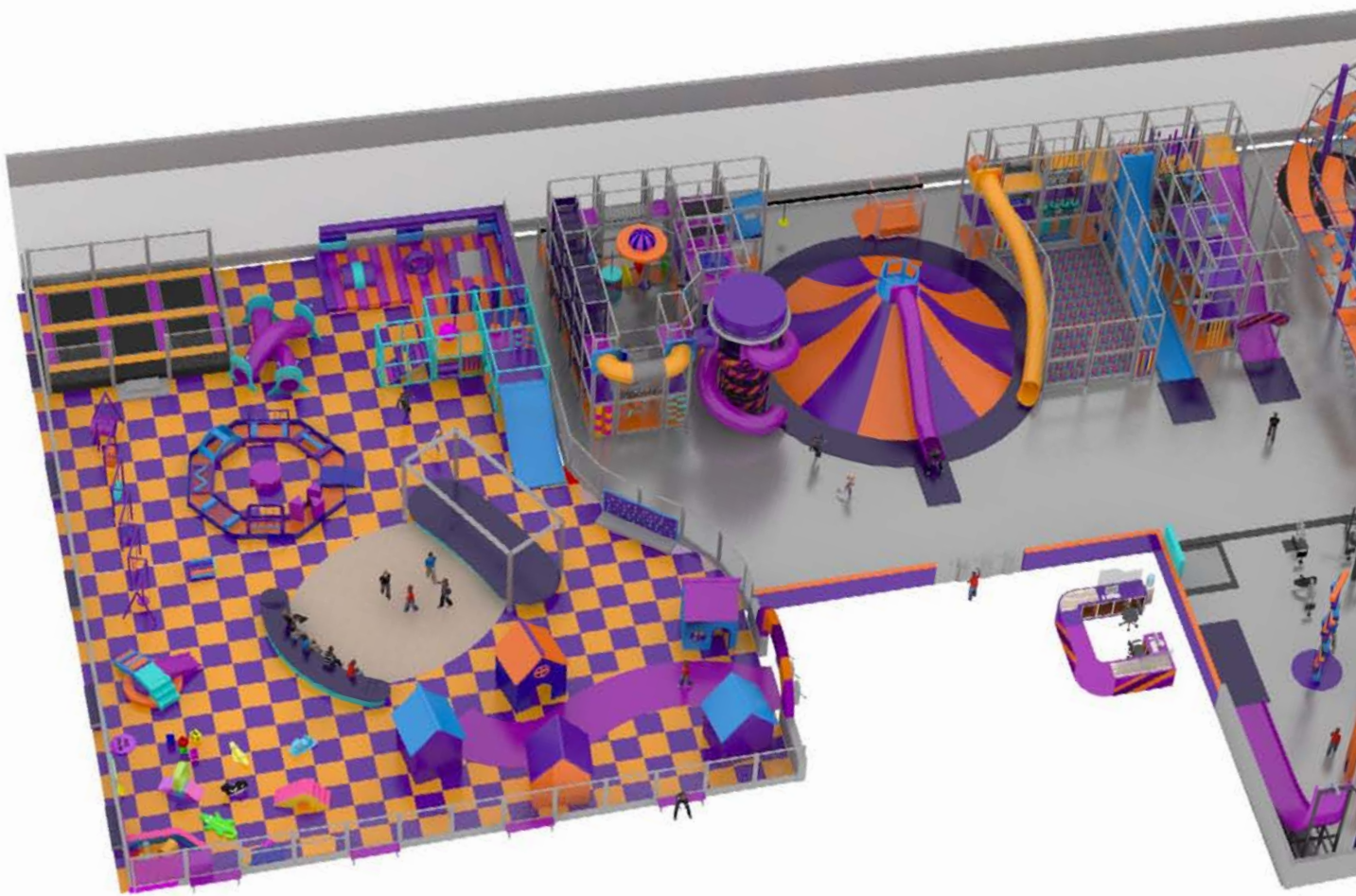
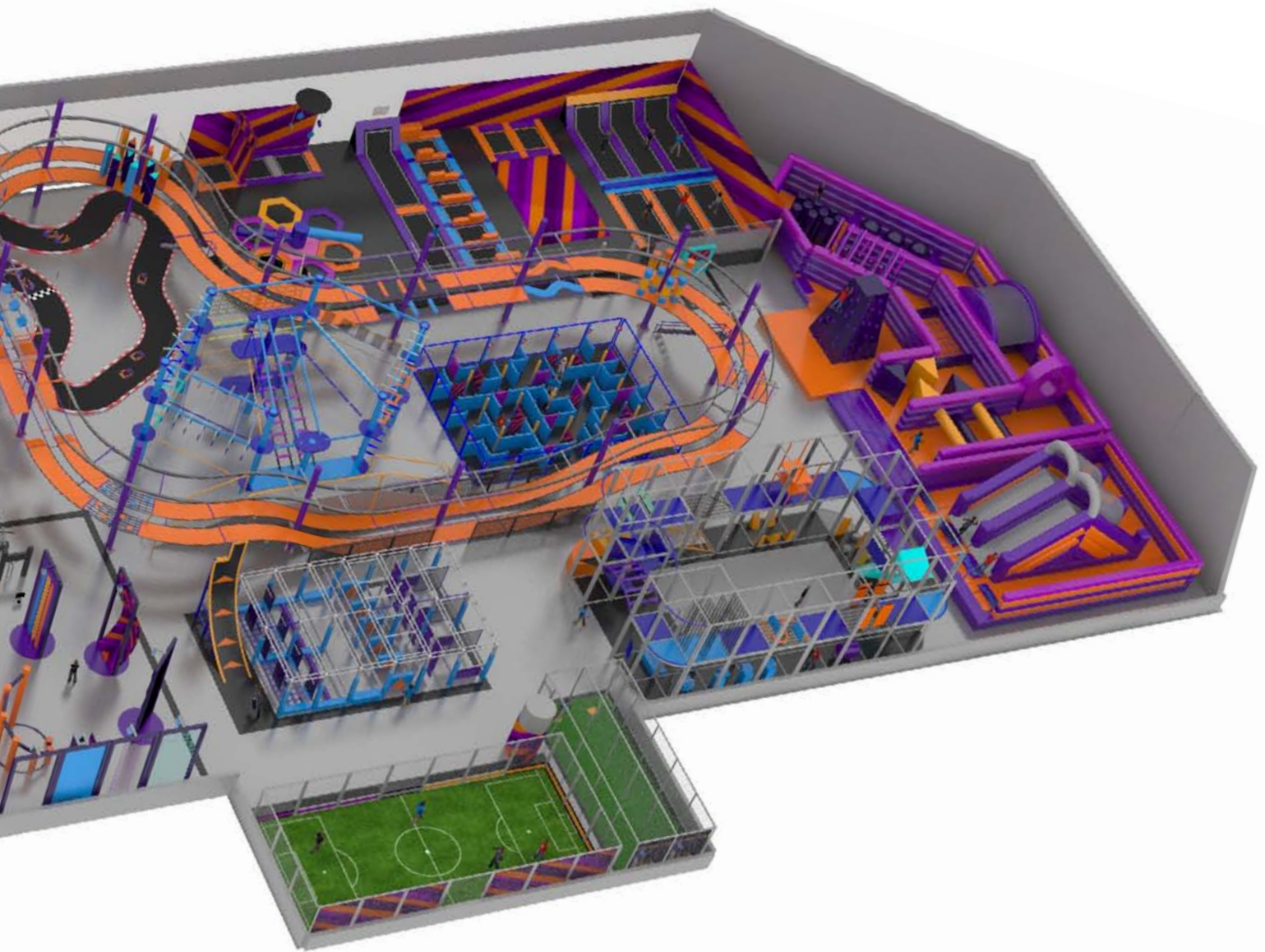


KIDZONE
realising fun ideas



ABOUT US

The first Kidzone indoor play park was built in 1994 and since then we have built up tons of experience that allows us to build the exciting structures and games that we do today. We provide a complete in-house production system from planning to installation. Indoor and outdoor. Large projects and small ones. From toddlers to grown ups. We value the trust that our clients put in us and we repay by providing them with quality installations. We are constantly looking to push boundaries of fun yet maintaining our high standard of safety. All our designs are built to meet strict European safety standards EN1179 and EN1177. The materials that we use, where applicable, are M1 and M2 fire certificated, non toxic, non abrasive and most of all, safe. Our flagship design is our unique modular panel system for play structures. This innovative design has been developed over many years which provides our clients with many benefits over the traditional tubeclamp system.



Very quick to install

Easy to reconfigure, extend, dismantle and reassemble

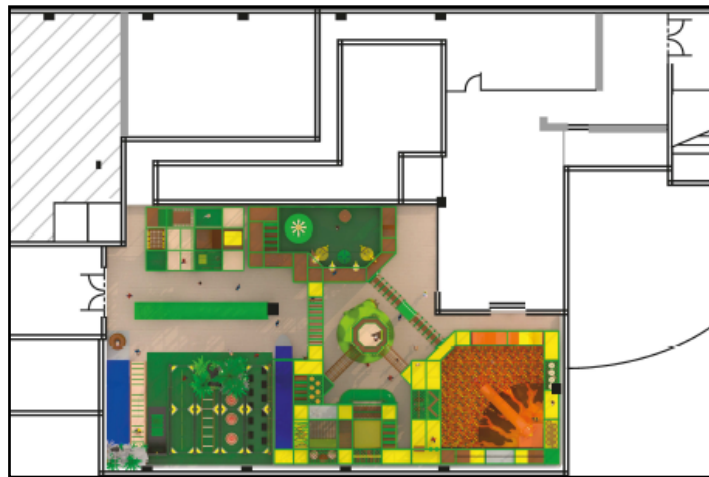
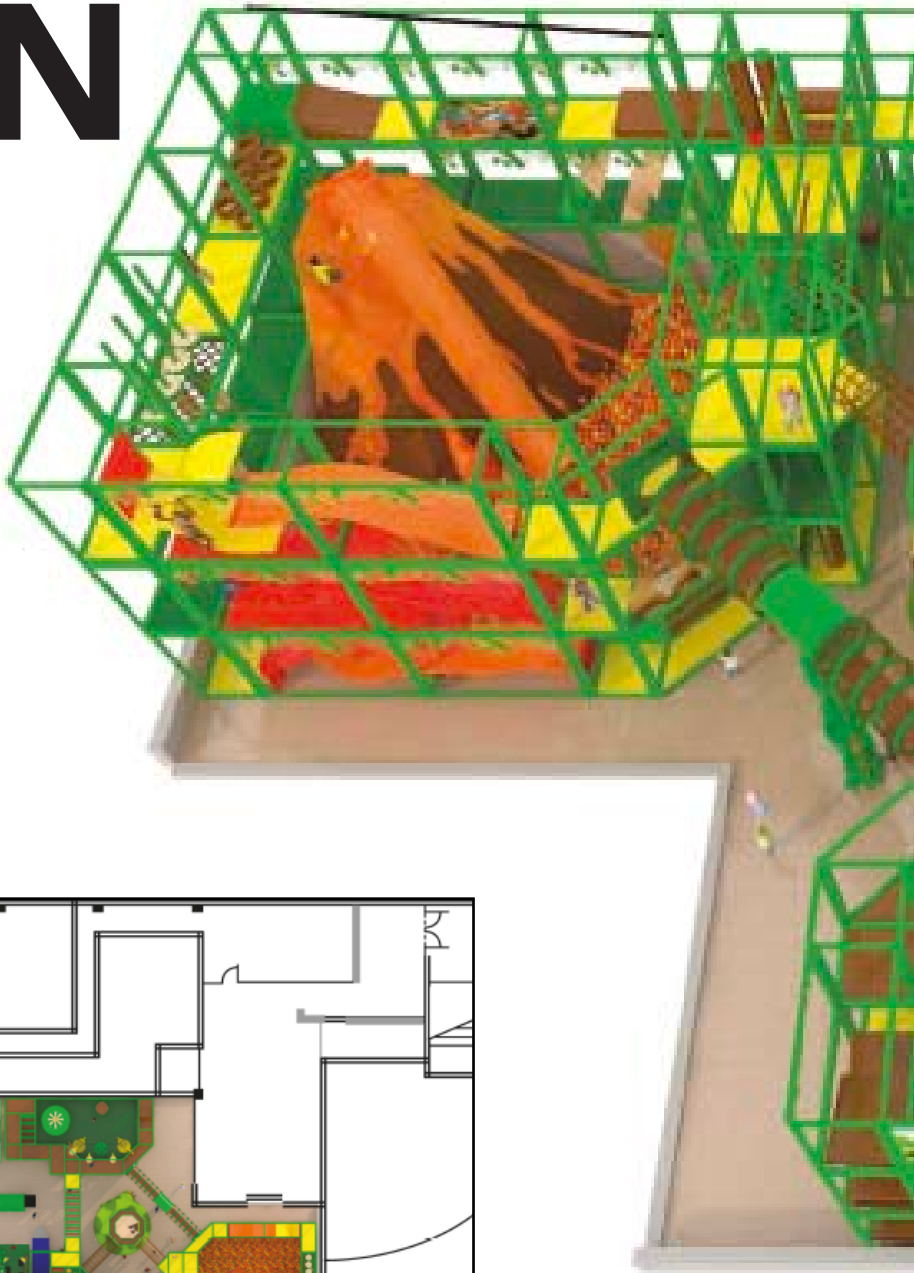
Very durable pvc covered panels

We have built quality play structures for hundreds of different clients, FECs, shopping malls, supermarkets, schools, hotels, shops and many other establishments all around the world.

The trends in play areas are constantly changing and Kidzone are right at the front. We have coined the phrase 'Play with Purpose'. Our goal is to not only to provide a safe environment for them to have fun, we are seeking to improve a child's fitness through play. No longer do we rely on asking a child how much 'fun' did they have as a barometer of their visit. We need to be able to quantify it. That is why we are developing our exciting RFID wristband technology. Many of our activities that we build can be fitted with sensors that measure how fast a section is completed, or how many reps within a specified time. This provides a metric which the child can then look to improve on in future visits. They get fitter, therefore healthier, which helps you keep your centre operating. And for you, the operator, it gives you analytics of which areas of your venue are the most popular so that you can continuously stay on top.

DESIGN

No two designs are ever the same because your requirements are individual as you are. Together we find the best design to suit your budget, that meets your needs and that of your clients where no project is too big or too small. With an extensive range of colours available we can match your company branding and with our talented art department, we can create a true fantasy world for your clients to enjoy.



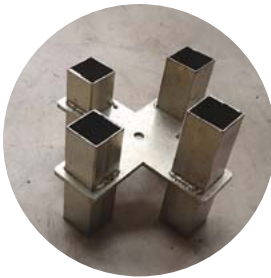


PRODUCTION

We have used our extensive experience in building all kinds and sizes of play areas to develop our unique modular panel system, the benefits of which we have outlined below.



1 PVC COVERED PADDING All new play areas look great when newly installed, the pictures of which adorn many company brochures. But in time those traditional tube clamp structures look tired and tatty due to the delicate bar padding and the cable ties that cause creases which become dust collection points. We cover our bar padding with durable, uv resistant and fire retardant pvc. This, together with the netting, is then tightly secured with a steel bar. Visit any one of our installations and you will find they look as new today as when they were freshly installed.



2 MODULAR DESIGN Our structures consist of steel panels that are connected with our purpose built connectors which don't just allow us to install quickly it also allows us to easily reconfigure a structure when you want to refresh the look of your park.



3 RESIDUAL VALUE Our system is the only one on the market that has a true second hand value and in some cases can be applicable for leasing.



4 SPEED OF INSTALLATION Where a traditional tube clamp construction will take 4 weeks to install a typical structure, with our prefabricated panels, we can reduce that to just 4 days. That means much less cost of installation, less time around your other tradesmen, you get to open sooner and less rental costs of your premises.



15 min



45 min



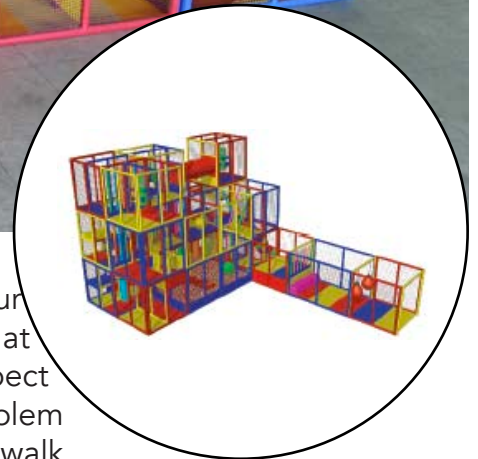
1.15 h



1.45 h



2 h



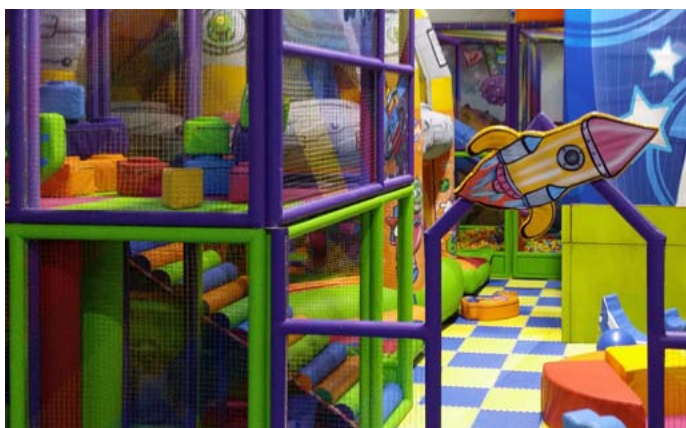
Another advantage exclusive to Kidzone is that we pre-build your structure in our warehouse where we can ensure when we arrive at your premises there are no surprises. You can visit our factory to inspect prior to shipping to ensure everything is to your liking. And its no problem if that is not convenient for you as we can also provide you a video walk through of your structure for your feedback.



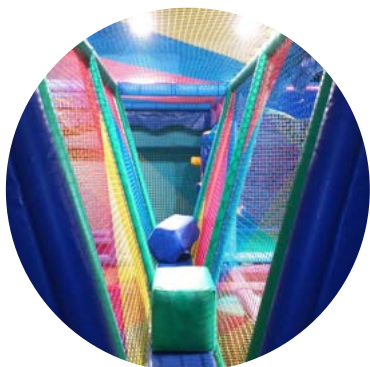


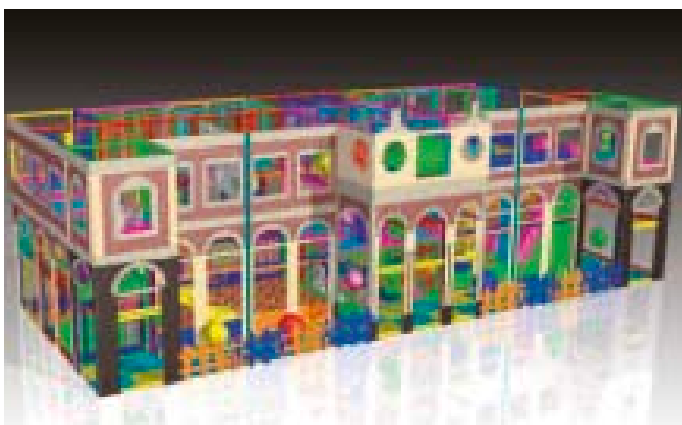
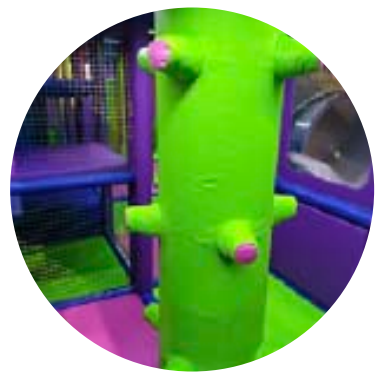
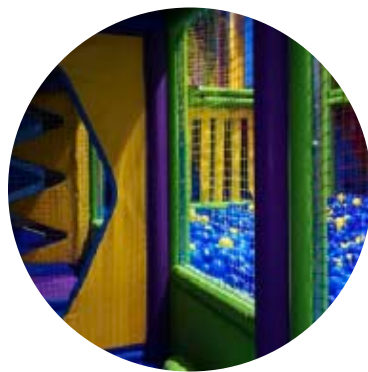
INSTALLATIONS

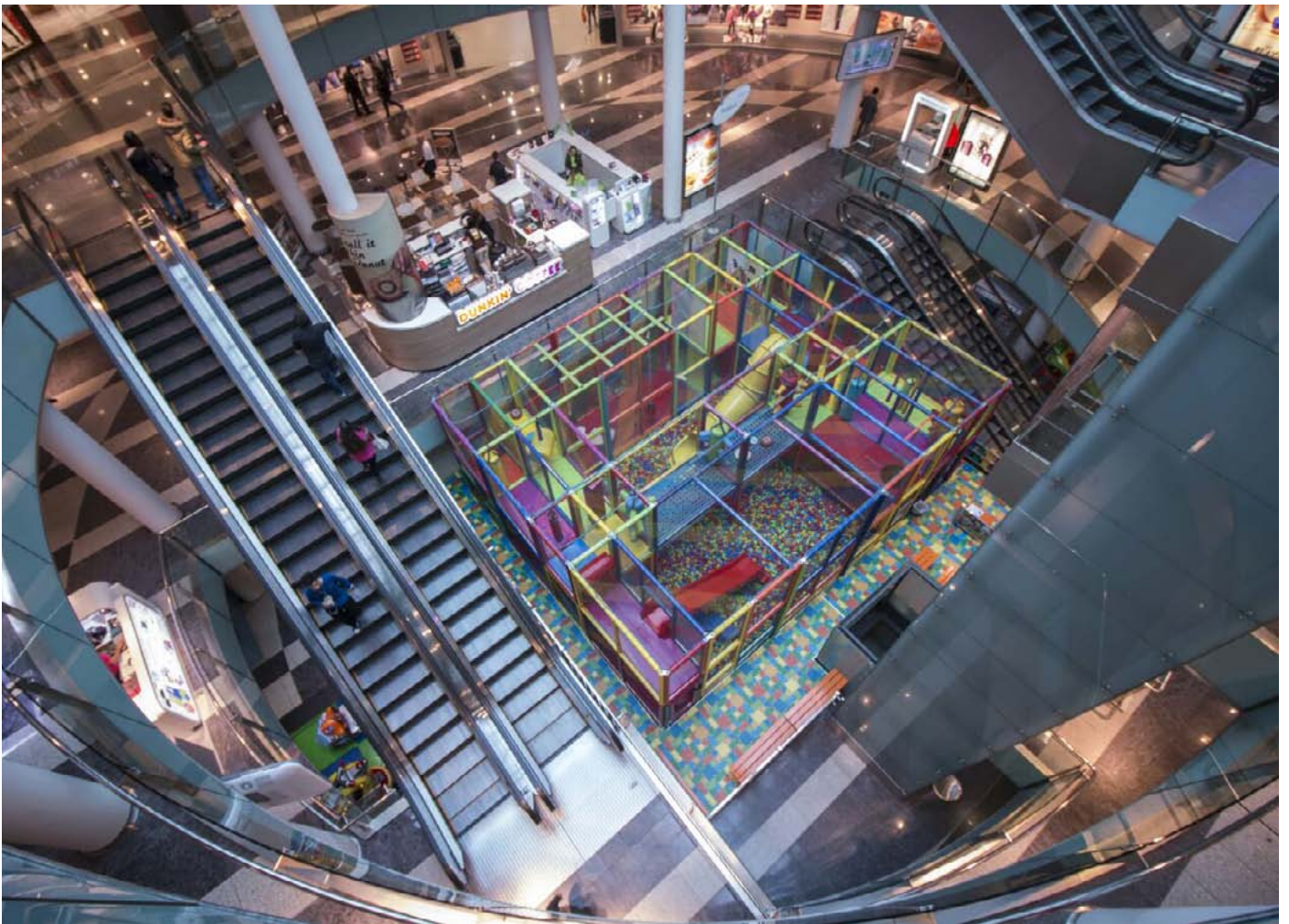
Whilst we build many different attractions like trampoline parks, climbing walls and trailer parkour our most popular installations are our play structures. Our clients are industry leaders in Europe, the Middle East and beyond. We believe a sign of our reliability is repeat business where to date we have installed over 24 soft play structures in Dubai. Our clients know we always deliver on time, on budget and on point. We take great care and pride in every project, no matter the scale.



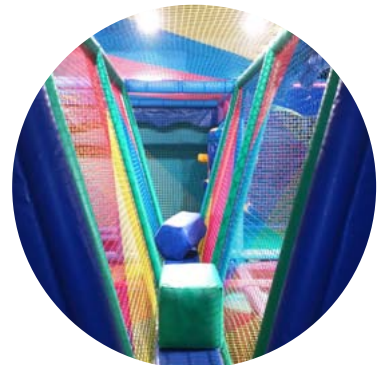
MALL OF EMIRATES, DUBAI

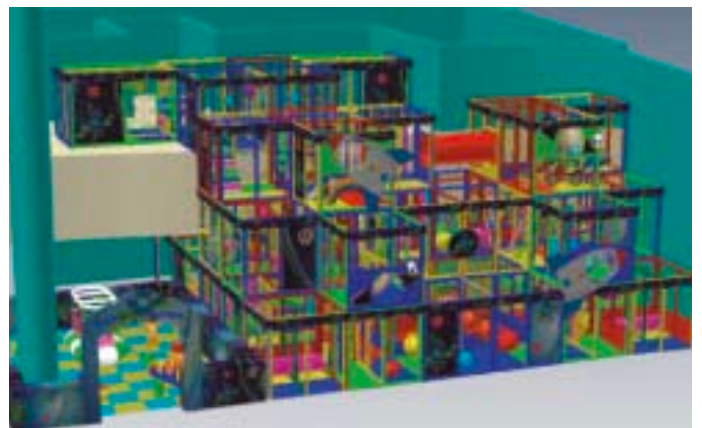


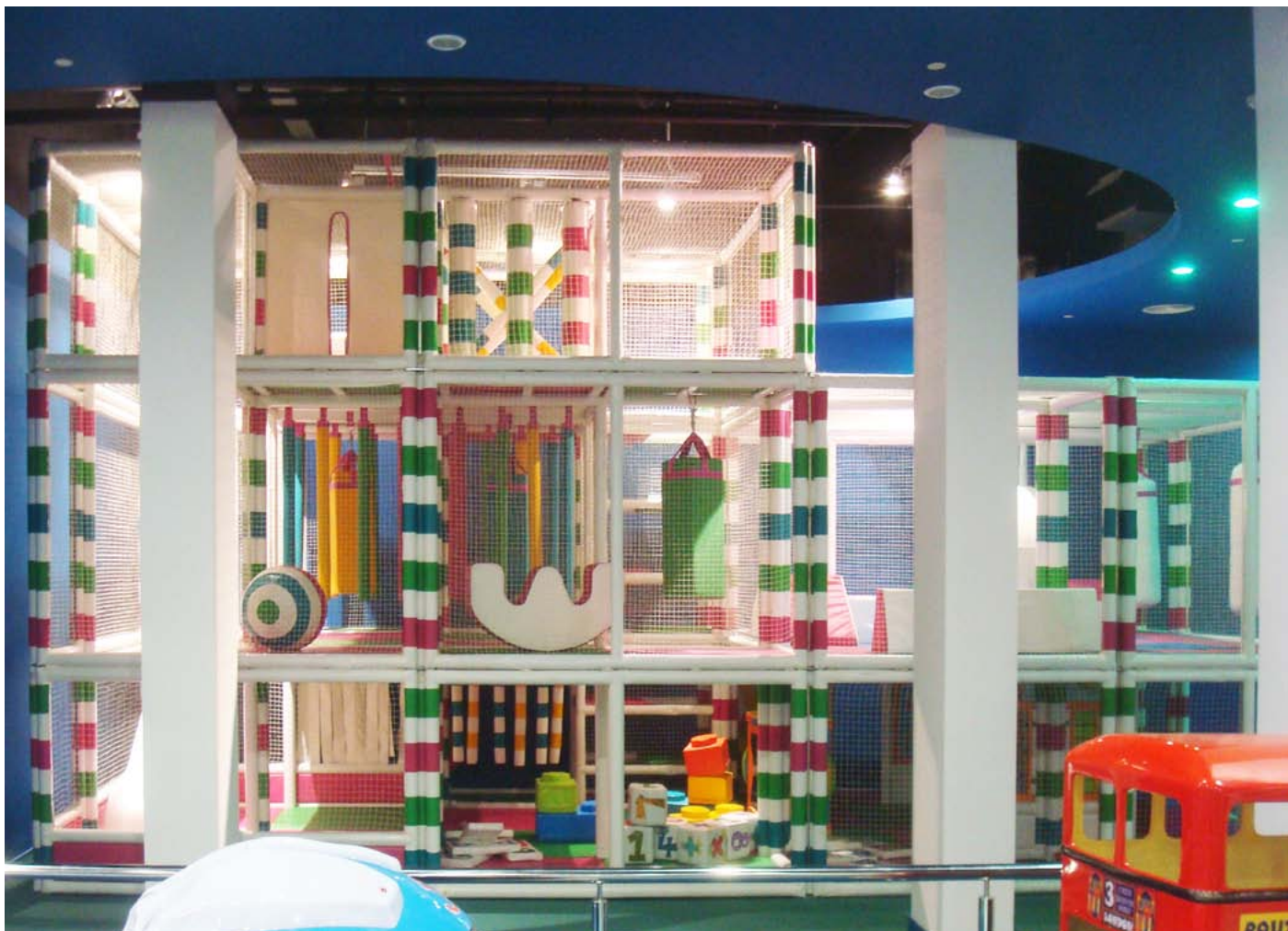




MADRID - SPAIN







MOSCOW - RUSSIA

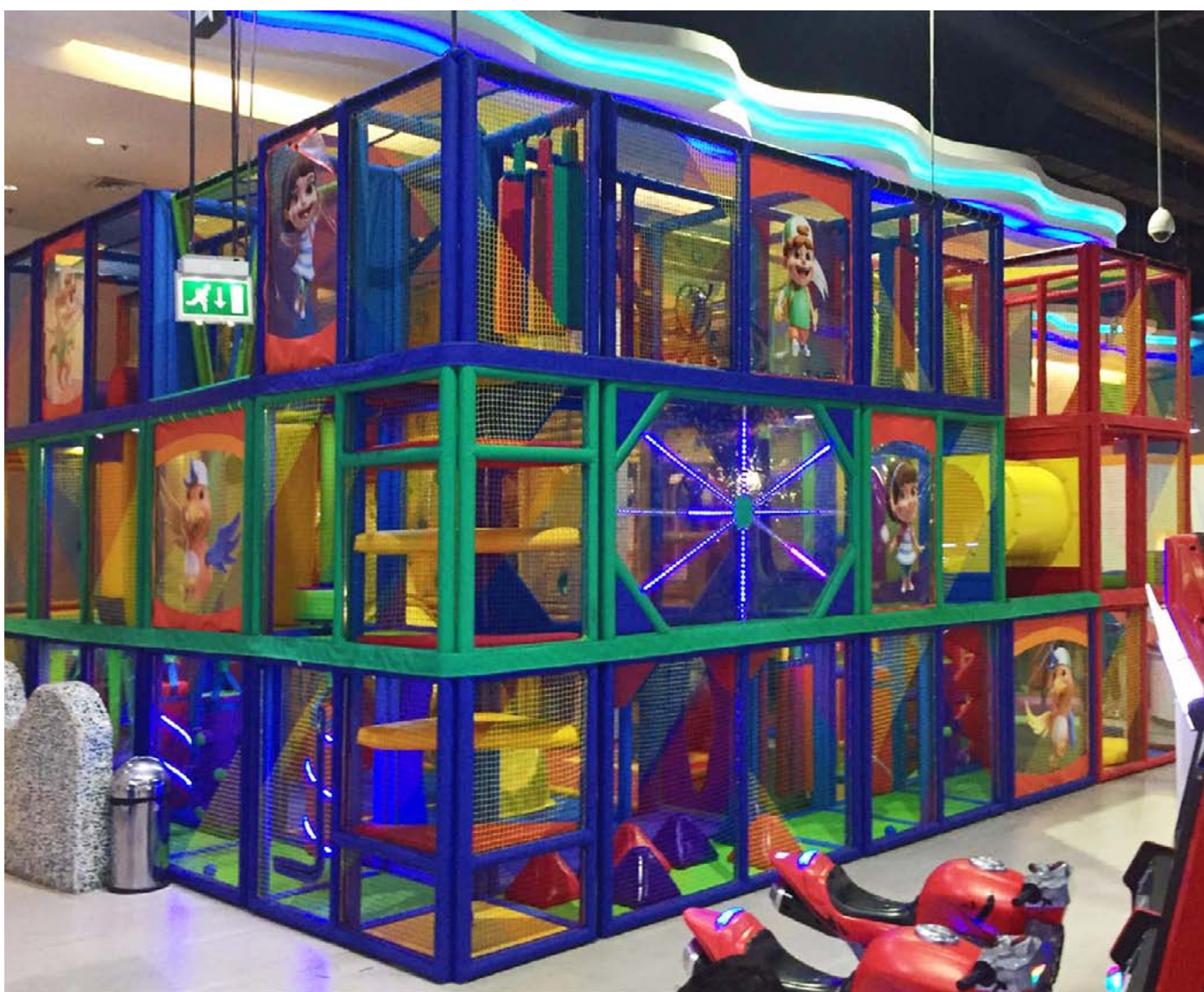




QUORUM, TAJIKISTAN



MIRDIFF, DUBAI



MIRDIFF, DUBAI



BARCELONA, SPAIN



OROPESA DEL MAR, SPAIN



SEVILLA, SPAIN



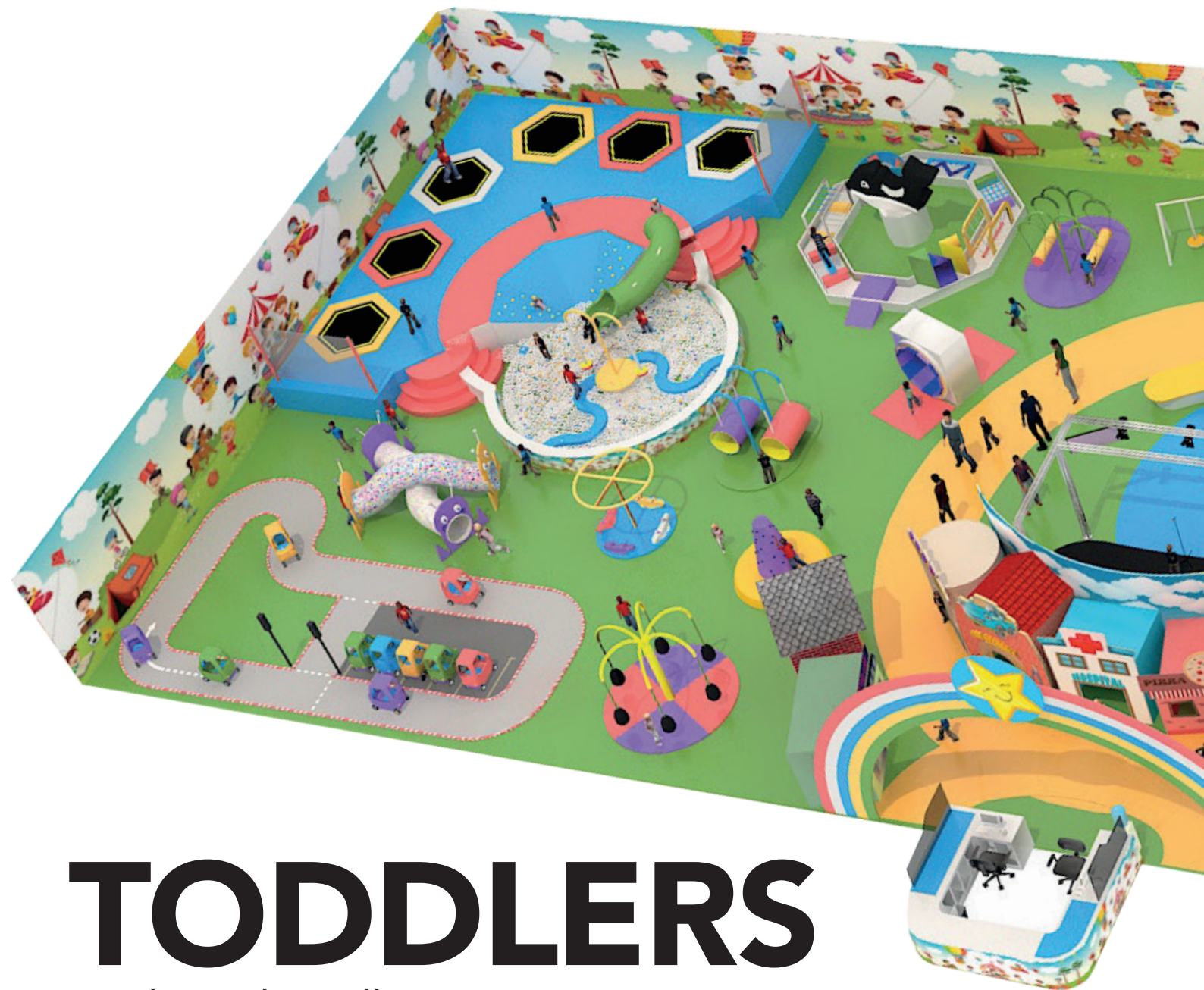
BEIRUT, LEBANON



RIPOLL, SPAIN



BINEFAR, SPAIN



TODDLERS

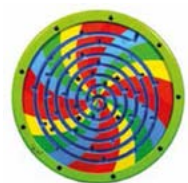
"Where they all start."



Our Toddlerzones are carefully designed to provide our smallest of customers a safe environment where they can learn to navigate around various soft obstacles that help towards refining their motor skills, dexterity, cognitive function, and promotes healthy mental and physical wellbeing. It's very important that our venues meet the needs of the whole family where they can spend their valuable leisure time, together as a family. And it starts here.



ACTIVITIES



SOFT PLAY





INFLATABLES



Inflatables have always been an integral part of an indoor play area due to the versatility in their design. Our sister company, ProFab SL is recognised as a world leader in the design and manufacture of inflatables since its inception way back in 1991. Since then literally thousands of inflatables have been carefully produced which justifies their expert status.

The options are vast when it comes to choosing which inflatable is best for your project. As with our structures we can design modular inflatables where you can choose from a multitude of different layouts so that you can offer diverse challenges and experiences. This in turn generates repeat visits. We can also provide attractive facades to a structure which are decorated in line with the theme of your venue.





AIR BALL

Air ball canons keeps your customers enthralled for hours with the vast range of activities that use safe air pressure to move the soft foam balls. From the simple, but effective, single shot ball canon that is fun and easy to use. Simply place the foam ball into the barrel inlet, aim, press the trigger button and POW! Ready for the next shot.

Then there is the automatic ball shower that has been designed to vacuum up to 800 balls into its hopper and shower them over the children below. The children herd as many balls as they can which fly up through the clear hoses and collect in the chamber. The trap doors swing open and the balls cascade onto to the excited children below! Contact us for a comprehensive list of the airball range.

TRAMPOLINES

Our trampolines come in all shapes and sizes from single bed to mega parks where the overriding feature is that they appeal to all ages, trampolines are truly a family attraction. Single and double beds never fail to provide enjoyment in a soft play park not to mention the health benefits such as cardio vascular fitness, balance and core strength to name just a few. However it is a sad reality that many large trampoline parks have seen their income reduce considerably in recent years as they are difficult to improve on in any way. Until now. We have added our rfid system to the various activities in a trampoline park which provides challenges with sensors that the customers will look to improve on at each visit.



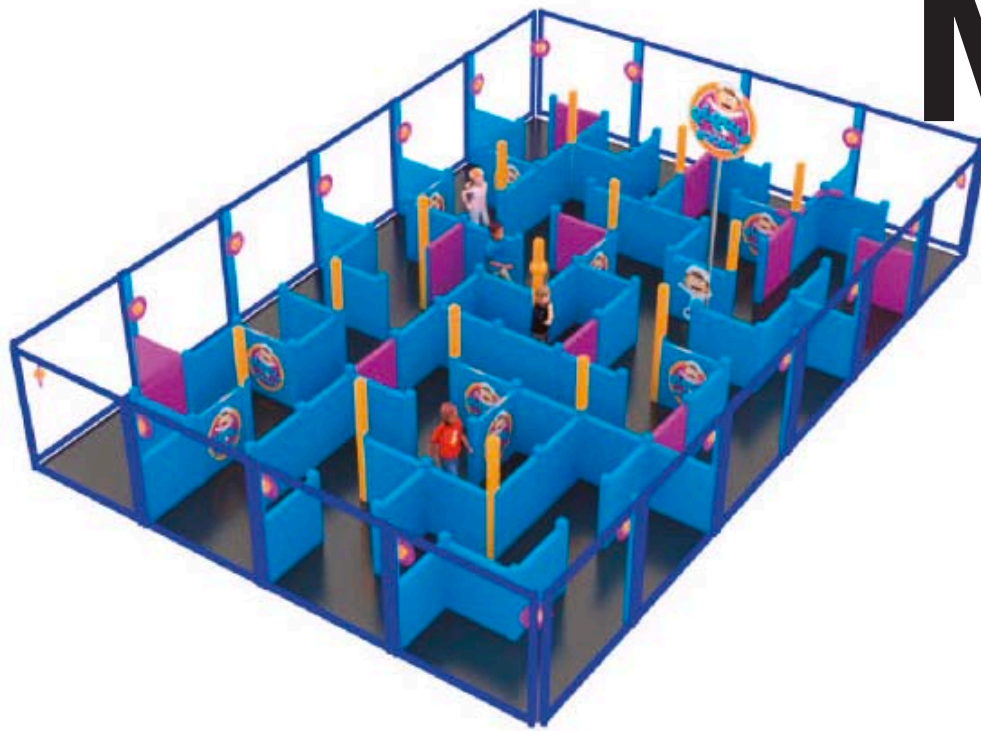
CLIMBING WALLS

Indoor climbing walls have fast become the go-to for indoor excitement. Where rain and cold weather are a bane for outdoor climbing there's nothing to dampen the spirits when climbing indoor. We currently offer over 35 different climbing walls that are easily inter-changeable to keep your area fresh. Simply bolt out the old and in with new.

We choose only the best products and there's none better than the trusted Tru-Blu auto belay system.

We get the children up in the most fun way possible, and Tru-Blu gets them down.





MAZE

All contained within our modular panel system this fun challenge tests the customers ability to tag as many lights as possible. To be used with our rfid system each user is designated their own colour once they have entered. They then have a limited time to touch as many flashing beacons that shows their colour. The maze provides the complication to the game. Whilst they can see their light its not so easy to get to it. As always the maze layout can be simply changed in just a few minutes.

PARKOUR

Parkour - the activity or sport of moving rapidly through an area, negotiating obstacles by running, jumping, and climbing

Parkour is increasing in popularity amongst the younger generation so we have designed a completely safe structure using our modular panel system offering the older children, bored with play structures and trampolining, an alternative environment that tests their agility in a way that will keep them coming back.

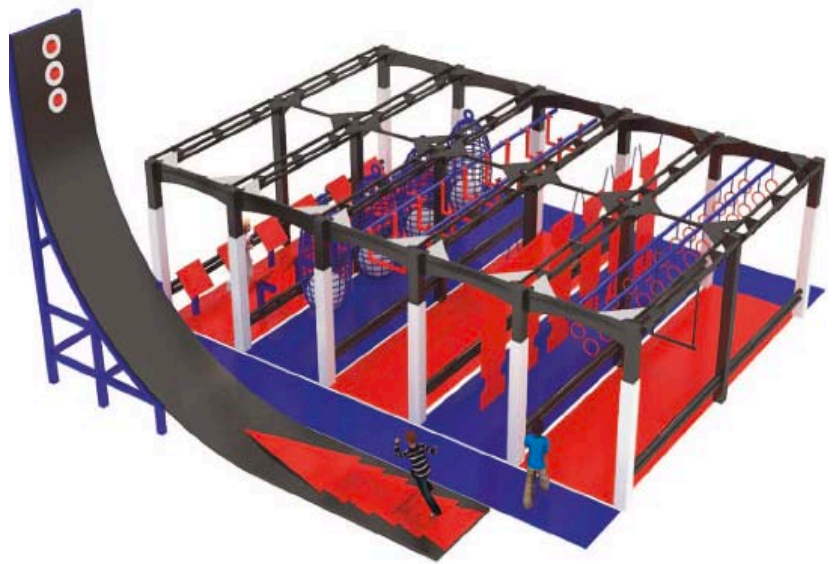
Players navigate their way around the structure as fast as they can. This will require dynamic, explosive movement which involves mind-muscle connection. Near all obstacles offer 2 or more options to get through dependant on the users agility, that ensures a full body workout. We have teamed up with a professional sports coach to ensure the circuit is designed in such a way that the user receives a full body workout.

In addition, players waiting in line, can get to see how others before them are running thus providing tips to help improve their own times. We have then added technology in the form of RFID wristbands whereby the players clock in at the start and out at the end - this will measure speed. A real time scoreboard provides instant timing as well as the player receiving a readout on exit of your facility with all their times that day. How quick did they perform? and how can they improve on their time next time? Race, Replace, Repeat!



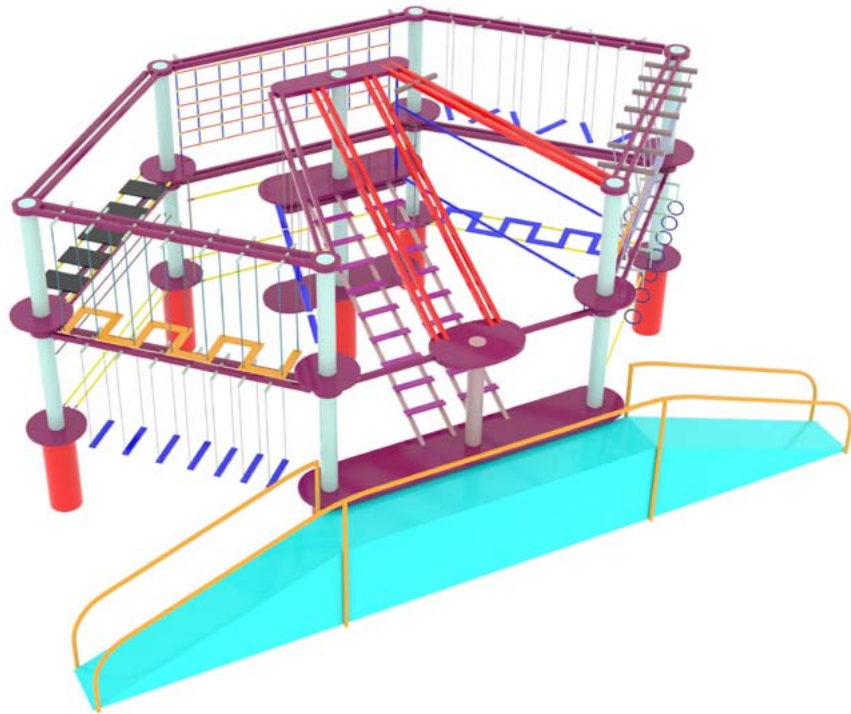
NINJA WARRIOR COURSE

We did not invent ninja Warrior courses but we have certainly improved them. As has been stated many times in this brochure a key issue for survival in this business is to encourage frequent visits to your venue. Once again, here at Kidzone, we have incorporated the modular system idea into these courses. Once our frame is installed all of our obstacles, currently 72 different designs, can be easily bolted in and out. This ensures that your customer can face different challenges each time they visit. What is more our frames occupy a much smaller footprint thus allowing an increased number of challenges in the same area as other manufacturers structures.



HI-ROPE

Once again here is an activity that appeals to all in the family. This adrenaline filled experience is one they will never forget. Our structures feature twin rails so that a slightly faster customer can overtake a slower one. this keeps the client flow through to a maximum. Our single or double floor modular constructions are easily adaptable to fit inside all interiors that can be configured in many different layouts.

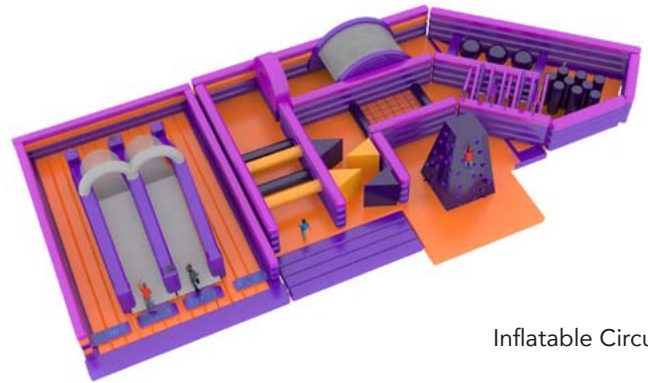


INNOVATION

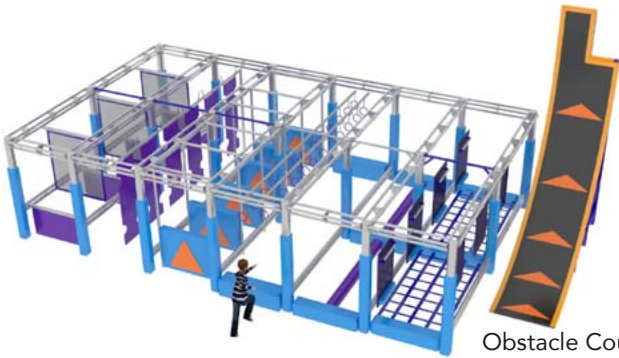
We are developing an exciting addition to our wide range of attractions. Repeat business is crucial to all in the leisure industry. Our RFID system is a game changer that allows a visitor to log in with their details that is then downloaded to their wristband, then at every challenge, be it climbing wall, circuit, obstacle course etc there is a sensor that identifies them. Once they complete the challenge they gain a score. This metric is what they will look to improve on in future visits.



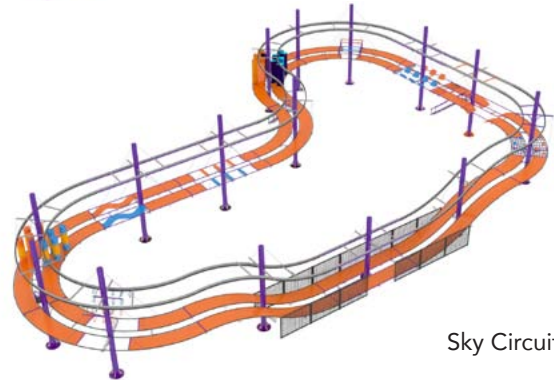
Play Structures



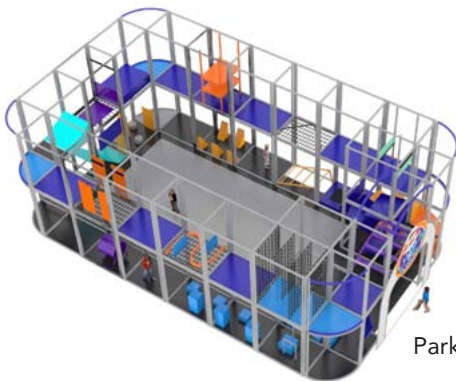
Inflatable Circuits



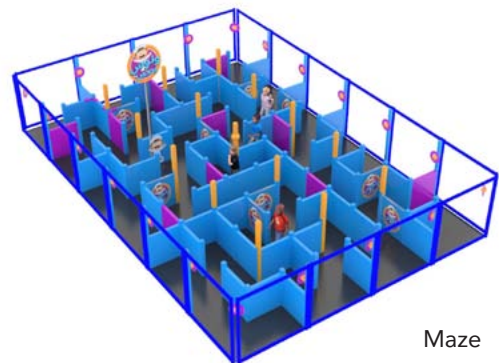
Obstacle Course



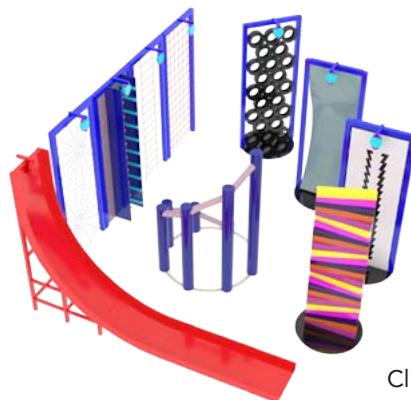
Sky Circuit



Parkour



Maze



Climbing Walls



*Wristband Included

SER- VICE

Whilst all our indoor play structures and equipment are built to very high standards it is recommended that they receive regular maintenance to ensure they continue to be as safe and near pristine as they were when they were installed. We have an experienced team that can visit on a regular basis to touch up where necessary.

In addition you may choose to want to reconfigure a layout, extend or replace. And in some cases you may wish to relocate, in which we can handle the dismantling, shipping and reassembly. We can also supply replacement parts to not only our panel system but to other manufacturers tube clamp system.

No matter the scenario we can help keep your venue in tip-top shape.



USED / RECONDITIONED

As all our products are based on our successful panel system our larger clients do look to upgrade/change their structures. This provides an opportunity to buy their second hand equipment. Where able, we always look to return the equipment to our factory where we can recondition where needed and send on to their new home. Please check our website for current offers or you can contact us directly.

Kidzone SL
Av. España, 2 nave b
Poligon Industrial Pont de Cabanes
12180 Cabanes
Castellón SPAIN

+34 601 209 466
disseny@kidzone.es
www.kidzone.es